

Soffit & Fascia

MEASUREMENTS

REPORT

PREMIUM

DATE

March 09, 2020

PROJECT NO.

svj1000

PREPARED FOR

John Smith Roofing, LLC

John Smith

123-456-7890



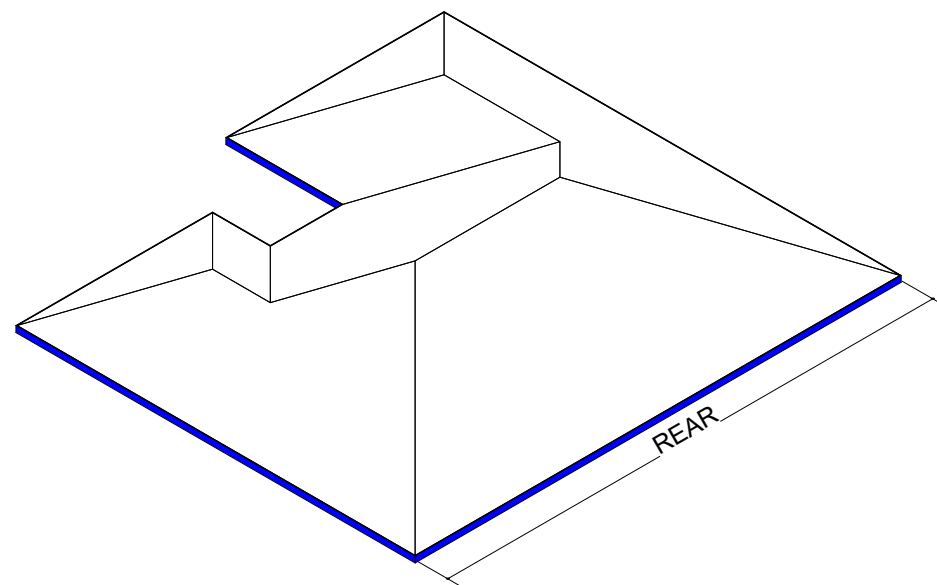
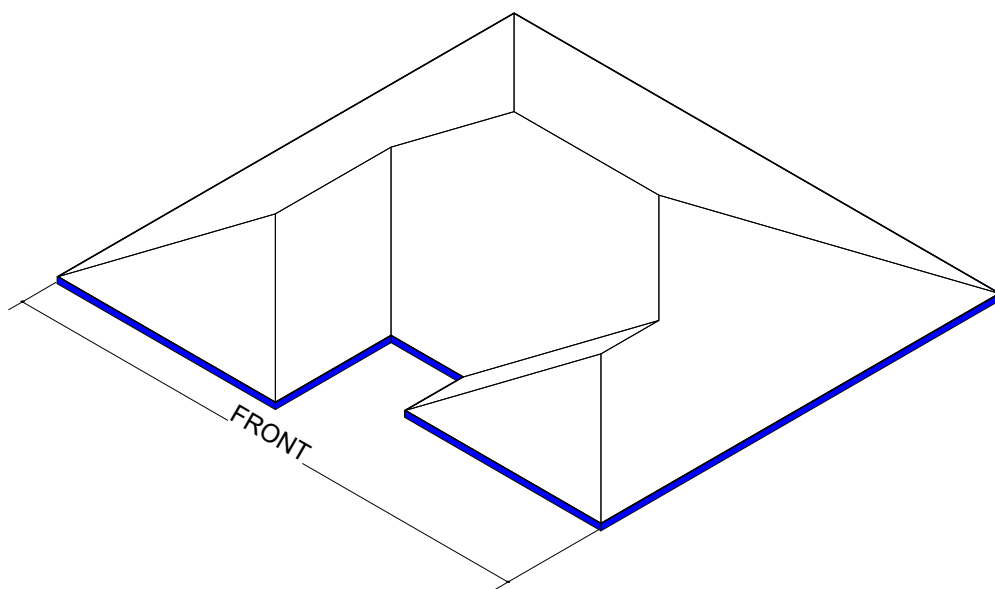
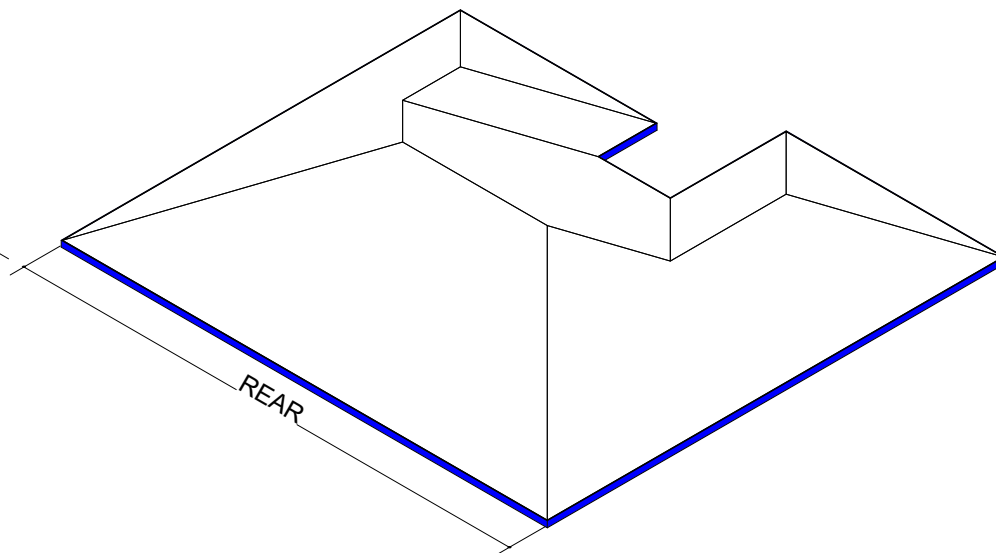
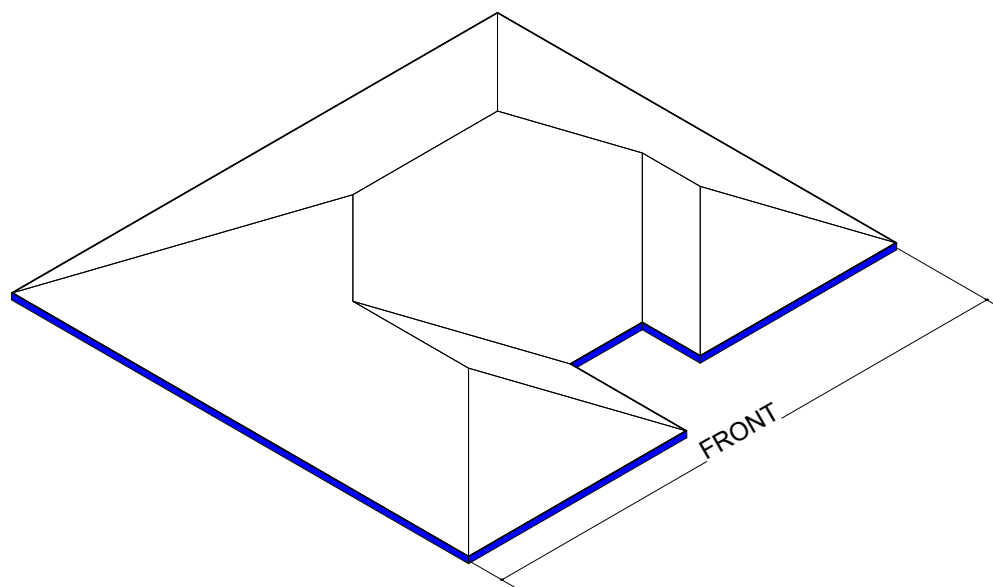
Type
Residential

793 Kara Cir
Rockledge, FL 32955

Fascia View

3D

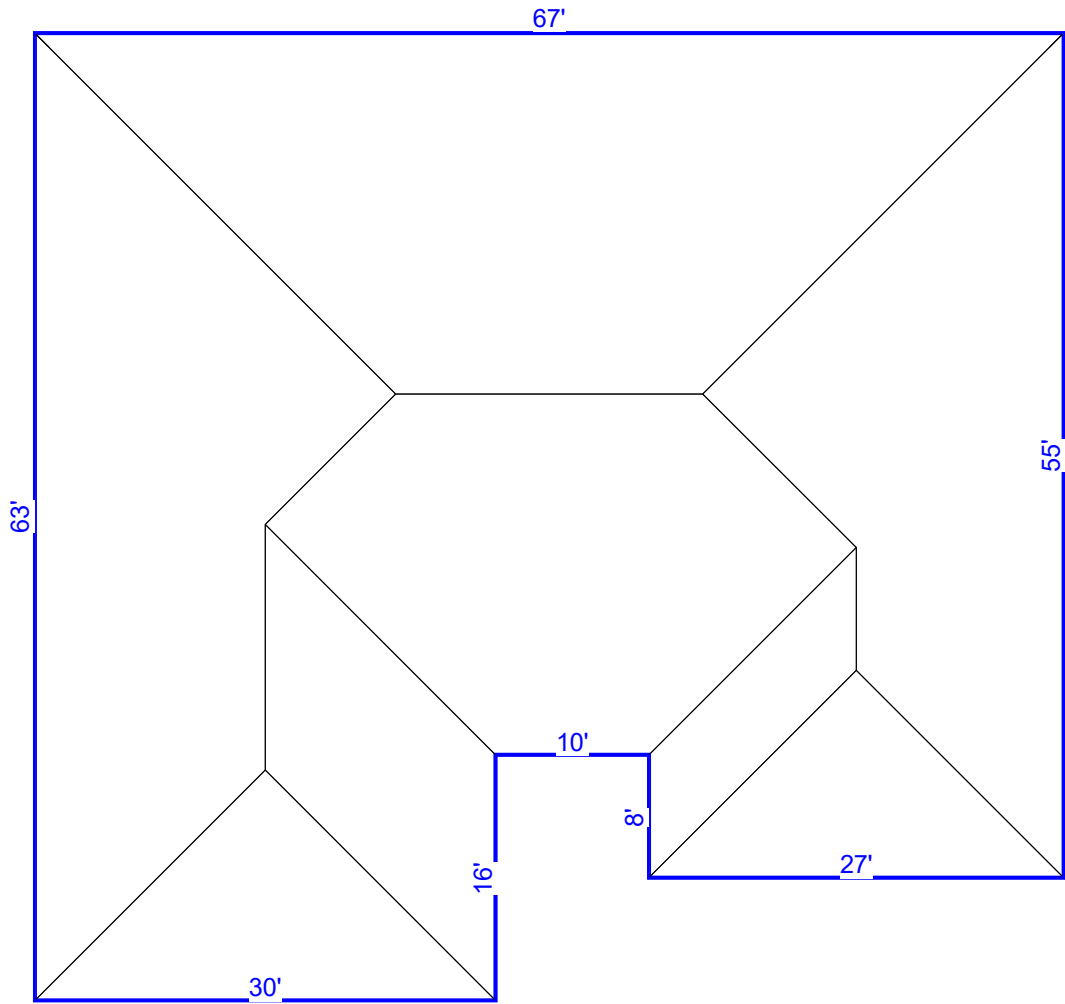
793 Kara Cir Rockledge, FL 32955



Fascia Measurements

Top View

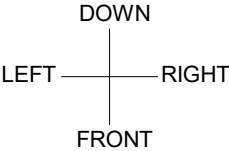
793 Kara Cir Rockledge, FL 32955

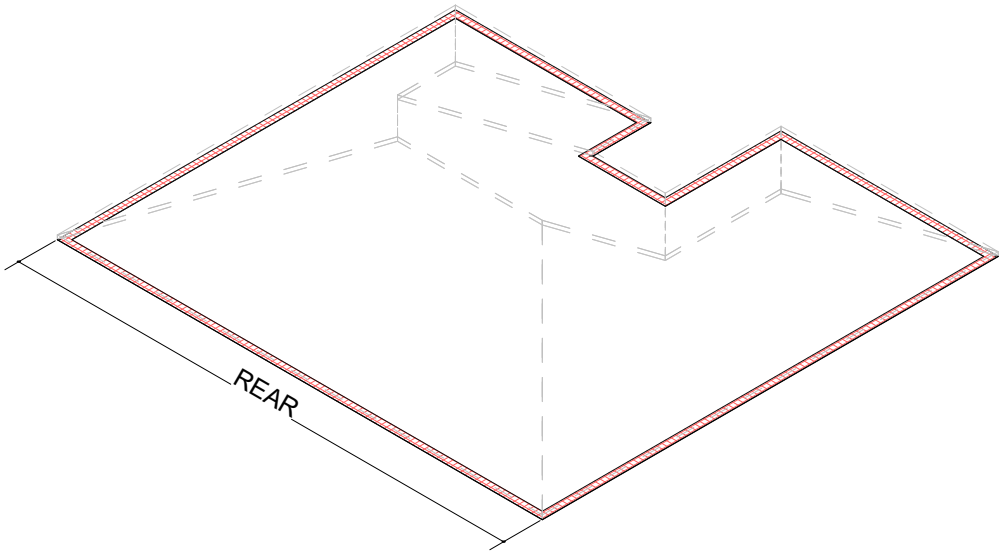
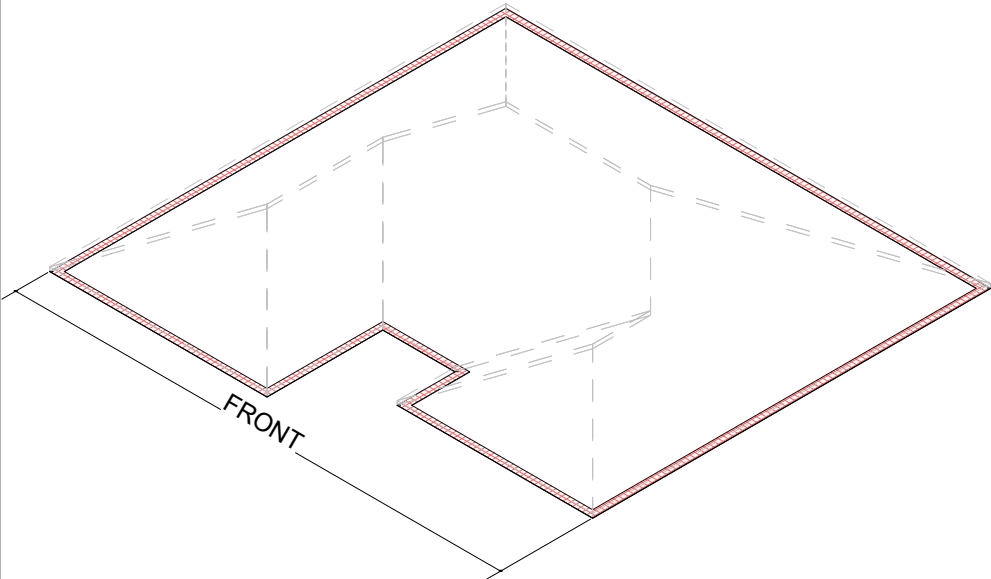
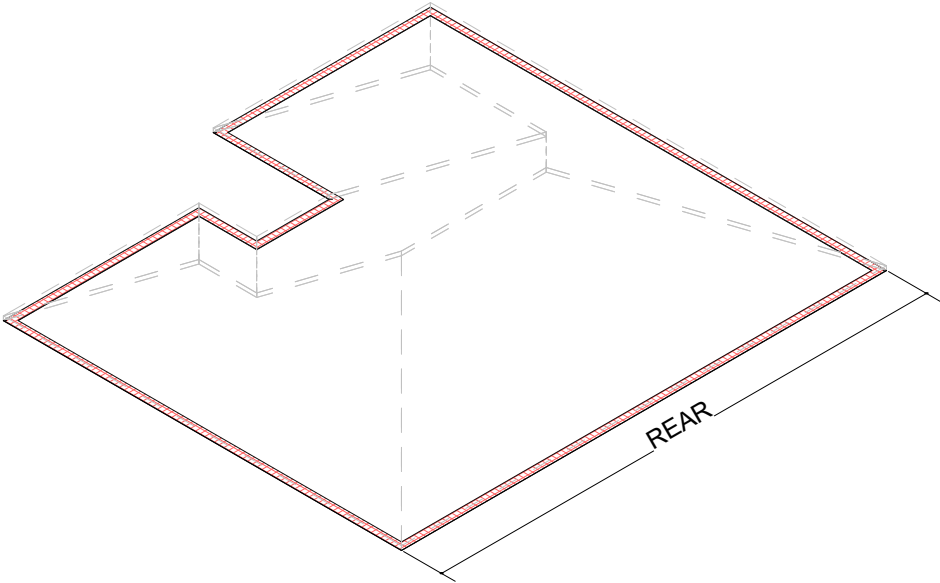
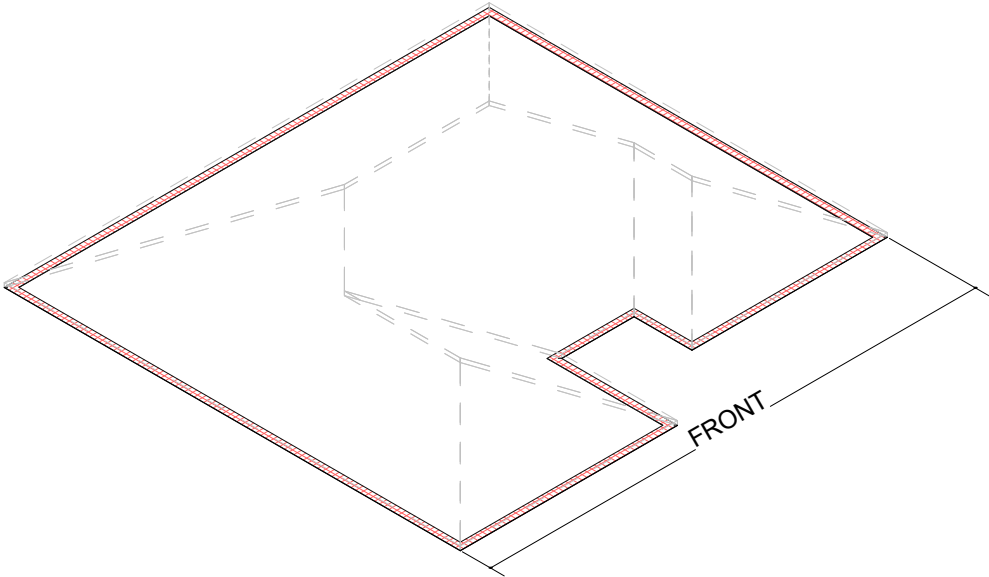


REPORT SUMMARY

Total Length	Fascia Required		
	Length	Pcs	
276'	276'	24	

Eaves. Rakes.

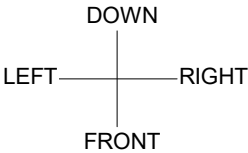
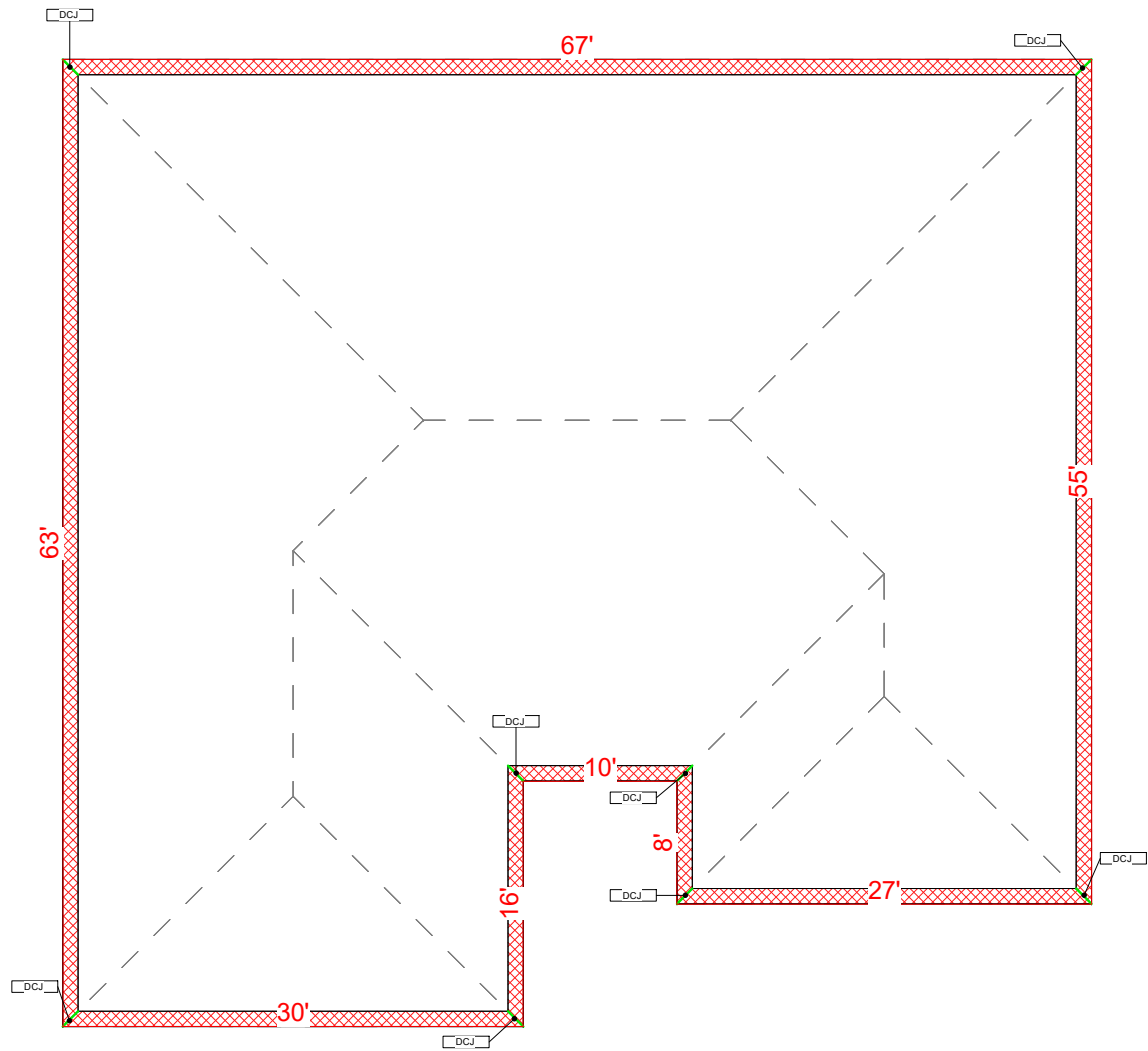




Soffit Measurements

Top View

793 Kara Cir Rockledge, FL 32955



- Eaves.
- Rakes.

REPORT SUMMARY							
Overhang:	12" Panel Wide:		16" Panel Wide:		F/J Channel Required:		Roof Corners:
	Length	pcs	Length	pcs	Total Length	pcs	
1'	332'	28	249'	21	311'	27	8
Double Channel Required:				Total Length		pcs	
				12'		1	